

JIKO-"Wisdom-Light"

September 2015

Volume 59, Issue 9



Monthly Newsletter of the Aiea Hongwanji Mission Embrace Change - Awareness (Seek Opportunities)

EVENTS OF SEPTEMBER 2015

Sep 3	Thur	9:00am	Aiea Buddhist Women's Association Meeting
Sep 5	Sat	9:00am	Honpa Hongwanji Hawai'i Board of Directors' Meeting
Sep 6	Sun	9:00am	Family Dharma Service and School
Sep 6	Sun	11:30am	United of O`ahu Jr. YBA Meeting at Mililani
Sep 7	Mon	10:00am	Oahu United BWA Quarterly Meeting at Aiea
Sep 12-13	Sat/Sun		Honpa Hongwanji Lay Association Convention (Hawaii Betsuin)
Sep 13	Sun	8:00am	Quarterly Temple Beautification Day- Grounds and Residence; No service
Sep 14	Mon	7:30pm	Aiea Senior Young Buddhist Association Meeting
Sep 15	Tue	7:00pm	Aiea Hongwanji Board of Directors' Meeting
Sep 16	Wed	7:30pm	BWA Movie Nite: <i>Lost in Translation</i> (Rated R, no children)
Sep 17	Thur	10:00am	Royal Hawaiian Band at Aiea Hongwanji Hall
Sep 18	Fri	7-8:30pm	2015 Peace Day Interfaith Celebration at Hawaii Betsuin
Sep 19	Sat	1-3pm	Peace Day Festival at Mililani: <i>Imagine Peace</i>
Sep 20	Sun	9:00am	Family Dharma Service and School
Sep 21	Mon		Peace Day Hawaii/U.N. International Day of Peace
Sep 22	Tue	all day	Aiea Preschool's CPK Fundraiser
Sep 27	Sun	9:00am	Buddhist Dedication Day (Autumn Higan-Equinox) Service
Sep 27	Sun	1:00pm	Dharma School Teachers of Oahu Workshop at Aiea
Sep 28	Mon	7:00pm	Oahu Hongwanji Council Meeting at Aiea

HIGHLIGHTS OF OCTOBER 2015

Oct 1	Thur	9:00am	Aiea Buddhist Women's Association Meeting
Oct 2	Fri	5:00pm	PBA's Lighting Our Way (LOW) Banquet at Waialae Country Club
Oct 4	Sun	9:00am	Family Dharma Service and School
Oct 4	Sun	11:30am	United of O`ahu Jr. YBA Meeting
Oct 10	Sat	11:00am	Affirmation Rites at Pearl City
Oct 11	Sun	9:00am	Pearl City Hongwanji BWA 100th /Kyodan 110th Anniversary
Oct 21	Tues	7:00pm	Aiea Hongwanji Board of Directors' Meeting
Oct 24	Sat	8-12:30pm	Patch of Madness at Ewa Hongwanji

Aloha Members and Friends

This is just a gentle reminder to members to send in your Sustaining (Gojikai) Membership Dues if you have not already done so. Sustaining Membership Dues are \$125 for Regular members and \$50 for Associate members who are 40 years of age or younger. The yearly dues are the same for an individual, husband and wife, and civil union couple.

PLEASE SAVE THE DATE FOR OUR ANNUAL HAWAIIAN DINNER FUNDRAISER
which will be on Saturday, November 7, 2015



NEED THE ASSISTANCE OF THE MINISTER?

Please call Rev. Kosho Yagi at 488-5685 (residence) or 487-2626 (office). If he is not available, leave a message on the answering machine.

For religious emergencies (Makuragyo or bedside services), please call Rev. Yagi on his cell phone, 364-2825.

Temple President, Warren Tamamoto, is also available for assistance. His pager number is 576-4136.

What is the Ohigan or Higan?

Minister's Message



It is a special Japanese term meaning “the other side of water or other shore.” The original word “Hi-gan” is “Paramita,” which means “To arrive at the other shore” in reference to the other Shore of Nirvana or Enlightenment as opposed to this shore (此岸 *Shigan*) of Samsara or delusion. “O” of “Ohigan” is the Japanese honorific word

These special services are observed by most Japanese Buddhists during the months of March and September of each year. During the month of March Ohigan begins on the 18th and ends on the 24th and in September it begins on 20th and ends on the 26th. The fourth days of each month are the main days of observance.

During the weeklong observance of study and meditation, the emphasis is placed on the observance of the six special practices called the “Six Paramitas” which brings us to “the Other Shore.”

The Six Paramitas or six practices are as follows:

- the path of giving which we know as Dana—to get rid of selfishness,
- the path of righteous behavior or observing precept keeps one to be thoughtful of the rights and comfort of others,
- the path of patience or perseverance helps one control a fearful or angry mind,
- the path of effort or energy helps one to be diligent and faithful,
- the path of meditation or concentration helps one to control a wandering and futile mind, and
- the path of wisdom changes a dark and confused mind into a clear and penetrating insight.

So by following these six practices, one can surely pass from this shore of delusion over to the shore of Enlightenment.

During Ohigan season, people are offer Botamochi (for Spring) and Ohagi (for Fall) for their family Altar. These are a Japanese sweet made with sweet rice and sweet azuki (red bean) paste. They are made by soaking sweet rice for half hour or more. The rice is then cooked, and a thick azuki paste is hand-packed around pre-formed balls of rice. The two different names are derived from the Botan (peony) which blooms in the spring and the Hagi (Japanese bush clover or Lespedeza) which blooms during autumn.

Let us enjoy the Dharma and Botamochi on the occasion of Ohigan week which take place twice a year-Spring and Fall.

Namo Amida Butsu
Rev. Kosho Yagi

INGREDIENTS

- *For Rice Balls:
- 2 1/2 cup Sweet rice (mochi gome)
- 1/2 cup Japanese rice
- 3 cup water
- *For Toppings:
- 3/4 lb. anko (sweet azuki bean paste)
- 1/2 cup crushed walnuts and 2 Tbsp sugar, ground
- 3 Tbsp black sesame seeds and 1 1/2 Tbsp sugar, ground
- 1/3 cup kinako (soy bean powder) and 2 Tbsp sugar, mixed

PREPARATION

Put both kinds of rice in a bowl and wash with cold water. Drain the rice in a colander and set aside for 30 minutes. Place the rice in a rice cooker and add measured water. Let the rice soak in the water for 30 minutes. Start the cooker. Put prepared toppings, such as anko and sesame seeds, in separate bowls. When rice is cooked, let it steam for 15 minutes. Mash the rice with wooden pestle until sticky. Wet hands and shape the rice into oval balls. Cover rice balls with different toppings.
*Makes about 32 rice balls



Hello everyone,

PRESIDENT'S MESSAGE

By the time you read this, O-Bon service and Dance at Aiea may be over. At this time, we are still busy with preparations and planning (if you are reading this on Friday or Saturday, think about coming down to the temple on Saturday evening). Thank you to everyone for your assistance. I won't be able to name individuals, but please accept a great mahalo from the AHM Sangha!

We're all still pretty busy, so I'll leave you with this thought. At the Hatsubon service this past Sunday, Rev. Yagi read a poem to the families and friends present. The poem is loosely based on a poem "Do Not Stand at My Grave and Weep" that is often read at funerals and memorial services. Mary Elizabeth Frye wrote the poem in 1932. I share the original version (written in 1931) with you.

*Do not stand at my grave and weep.
I am not there. I do not sleep.
I am a thousand winds that blow.
I am the diamond glints on snow.
I am the sunlight on ripened grain.
I am the gentle autumn rain.
When you awaken in the morning's hush
I am the swift uplifting rush
Of quiet birds in circled flight.
I am the soft stars that shine at night.
Do not stand at my grave and cry;
I am not there. I did not die.*



Have a great weekend!
Warren Tamamoto

Mettabhavana Meditation

Amida Buddha surrounds all men and all forms of life with Infinite Love and Compassion. Particularly does he send forth loving thoughts to those in suffering and sorrow, those in doubt and ignorance, to those who are striving to attain Truth; and to those

whose feet are standing close to the great change men call death, Amida Buddha sends forth oceans of Wisdom and Compassion.

Namo Amida Butsu.

Aiea Hongwanji Mission,
99-186 Puakala St,
Aiea 96701
PH: 487-2626
Email:
aieajiko@gmail.com

AHM Preschool
PH: 488-0404
Lotus Adult Day Care Center:
PH: 486-5050

WELCOME TO NEW MEMBERS

We would like to extend a very warm welcome to new members George Hoshino and Mark and Yuka Masutomi. We look forward to their participation in our temple activities. Please encourage your family and friends to join Aiea Hongwanji. Annual membership dues for 2015 are \$125 for regular members, and \$50 for those associate members who are 40 years and younger.

NEWS from Lotus Adult Day Care Center

THE ROYAL HAWAIIAN BAND will be performing on Thursday, September 17, 2015 at Aiea Hongwanji Mission in the Hall starting at 10:00 A.M. THE PUBLIC IS INVITED.



AIEA HONGWANJI HALL WEEKLY ACTIVITIES

Sunday	Dharma Service	9:00 a.m. - 10:00 a.m.
Sunday & Thursday	Hosha Work Days	8:30 a.m. - 12:30 p.m.
Monday to Friday	Preschool Use	8:45 a.m. - 11:45 a.m.
Monday & Thursday	Kumon Class	2:00 p.m. - 5:30 p.m.
Monday & Wednesday	Zumba Class	6:00 p.m. - 7:00 p.m.
Tuesday & Thursday	Judo	5:30 p.m. - 8:30 p.m.
Tuesday & Thursday	Sanshin Class (classroom)	7:00 p.m. - 9:00 p.m.
1st Thursday	BWA Meeting	9:00 a.m. - 10:30 a.m.
Thursdays	BWA Craft Class	8:30 a.m. - 12:30 p.m.

NEWS FROM HEADQUARTERS

Young Buddhist International Cultural Study Exchange (YBICSE). Honpa Hongwanji Mission of Hawaii participants and chaperones enjoyed a wonderful trip to Japan for this year's YBICSE program from July 12-24. Youth participants were Evan B____ and Tyler O____ from Mililani; Katelyn O____ from Pearl City; Alecsander B____, Kimberly K____, Kenneth K____ and Zo'i N____ from Hilo Betsuin; Andrew M____ and Sheera T____ from Pacific Buddhist Academy; and Cameron, Colin, Keri K____ and Tyler Y____ from Hawaii Betsuin. Chaperones were Reverend Ai Hironaka from Lahaina Hongwanji and Debbie Kubota from Hawaii Betsuin.



The Hawaii contingent had a great sendoff at the Honolulu Airport, as Bishop Eric Matsumoto and Reverend Toshiyuki Umitani were there to greet the participants (along with their parents) and the chaperones, and to wish them well on their journey. Hawaii participants were fortunate to have additional sightseeing adventures coordinated by the Japan Travel Bureau (JTB), in addition to the formal YBICSE program. First stop was Tokyo, where the group visited the East Garden of the Imperial Palace, Asakusa, Tokyo Sky Tree, Harajuku/Shibuya/Takeshita Street, Tsukiji Betsuin and Tsukiji Fish Market. Next, they traveled to Kyoto for the YBICSE program, and enjoyed meeting other participants from BCA, Canada and South America. There were 10 Hawaii participants for the Confirmation Rites, performed by the Former Gomonsu Koshin Ohtani. The YBICSE group was extremely fortunate to have a group photo as well as an audience with the Gomonsu, His Eminence Kojun Ohtani. Study sessions were conducted at the Honzan about the Buddhist concepts (Six Paramitas) and Shinran Shonin, and rituals (such as the proper way to bow and to offer incense). Excursions were conducted to important sites in Shinran Shonin's life and to the Hiroshima Peace Park and Museum. While visiting the Ohtani Mausoleum, Reverend Hironaka performed a brief service with the Hawaii group in the section dedicated to the remains of those from Hawaii. During free time in Kyoto, the Hawaii group was able to enjoy the annual Gion Matsuri and visit the Fushimi Inari Shrine.

The youth participants spent 2 days on homestays with local host families from the Kobe area, and had a joint activity session with Kobe Ryukoku High School. During the YBICSE program, the group visited several temples, including Hiroshima Betsuin and Kobe Betsuin. It was a sad parting for the international YBICSE sangha to say goodbye to each other at the end of the program. They are fortunate that with today's social media capabilities (Facebook, Instagram, etc.), it is easy for them to stay connected with their newfound friends from around the world.



After the close of the formal YBICSE program, the Hawaii group was again fortunate to have additional touring planned by Hawaii Kyodan and JTB. The group traveled to Osaka for an overnight stay and visits to the Osaka Aquarium Kaiyukan, Shinsaibashi/Doutonbori Street, Tsumura Betsuin, Soai High School, Osaka Castle and Rinku Town. Upon arrival back in Honolulu, the group was welcomed by Reverend Umitani and his daughters, along with the participants' families for a wonderful homecoming.

Hawaii participants and chaperones had a fabulous time and would definitely encourage future participation of Dharma School and PBA students. Many, many thanks to the Kyodan for their wonderful support of this incredible program opportunity! (Debbie Kubota – Hawaii Betsuin)

HQ BOOKSTORE UPDATE HQ Bookstore recently started to sell new items! **Honpa Hongwanji Mission of Hawaii original Grocery Tote Bag (\$3.00) and Insulated Tote Bag (\$8.00)** are now available for purchase. Both Bags are big and very useful for your grocery shopping. If you would like to buy these bags, please stop by HQ Bookstore or contact Yoshiko at (808) 522- 9202 or send e-mail to hqbooks@honpahi.org.



We also sell a cute **Life is Wabi-Sabi, Dharma Cat Tote Bag (\$5.00)**.



2015 PEACE EVENTS



Peace Begins With Me!

*Peace in my heart
Peace in our home
Peace at work and school
Peace in my community
Peace in the World!*

It's up to ME!



September 21 is World Peace Day



Oahu District

Peace Day Festival

Goals: To create awareness on World Peace Day and to encourage a sustainable life style

For: Dharma families and friends -----No admission Fee!

Games and crafts, information, snacks and free items

(small fee/donation for some crafts and snack items)

*Free tote bags while supplies last—bring a used clean t-shirt
to cut & make your own re-usable shopping bags!*



**Saturday, September 19, 2015
@ Mililani Hongwanji next to Rec 3
1:00 PM to 3:00 PM**



Contact dharma.connection@gmail.com or call 625-0925 for more information

2015 Peace Day Interfaith Celebration Building Peace

Date: Friday, September 18, 2015

Time: 7 p.m. – 8:30 p.m.

Place: Honpa Hongwanji Hawaii Betsuin
1727 Pali Highway

Please join us for the 5th Annual Peace Day Interfaith Celebration sponsored by the Honpa Hongwanji Mission of Hawaii and co-sponsored by Honpa Hongwanji Hawaii Betsuin, Hawaii Conference of Religions for Peace, The Interfaith Alliance Hawaii, and Pacific Buddhist Academy.

In 2007, Hawaii became the first state to recognize Peace Day. International Day of Peace is observed around the world on September 21. The United Nations General Assembly declared this as a day devoted to strengthening the ideals of peace, both within and among all nations and peoples.

The service will feature speakers and musical performances from a variety of faith traditions. With the theme of “Building Peace,” the event is open to the general public.

For more information, please contact Liane Vilorio, Events Manager, Pacific Buddhist Academy, at 532-2649, or liane.viloria@pbahi.org.

Peace of Bell Ceremony sponsored by Wahiawa Hongwanji Mission

September 11, 2015 at 8:30am at Wahiawa Hongwanji Mission

Peace Day Service sponsored by Pearl City Hongwanji Mission

September 20, 2015 at 9:00am at Pearl City Hongwanji Mission

Interfaith Round Table sponsored by Kapaa Hongwanji Mission

September 20, 2015 from 2:00pm-6:00pm at Lydgate park Main pavilion

Speaker: Jim Jung (Former state attorney)

International Peace Day Celebration sponsored by the West Kauai Hongwanji Mission

September 21, 2015 from 5:00pm—8:00 pm at Talk Story Theater Sparky's Garden

Includes Candlelight walk to Hanapepe Soto Zen

Peace Day Service sponsored by Kona Hongwanji Jr. YBA

September 20, 2015 at 9:00am at Kona Hongwanji Mission

Honokaa Community Peace Week (9/20-27)

9/20, 3pm: Autumn Higan and Peace Day—Service at Honokaa Hongwanji

9/21, 3pm: Golden Chain of Love mural painting at Hamakua Youth Center

9/21, 5pm: Read for Peace in Honokaa Library

9/23: Peace Day Movie Night at People Theater

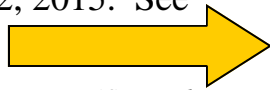
9/25: Peace Poster Gallery Kickoff Event

9/26: Peace Parade (4pm), Peace Day Festival (5pm)—Featured speaker Rev. Hagio

9/27: 9am-3:30pm; Mindfulness: The Everyday Path of Peace, Health and Wellbeing; with Gavin Harrison at Honokaa Hongwanji

Aiea Hongwanji Preschool

- The Preschool is at total enrollment with 97 students.
- Thank you to Hosha Gang for supplying the Preschool with tools to work in our garden, sand box and wooden shelf. They also helped to repair and stabilize the toy shelf. ♥ ♥
- Masa Hamamura has renovated the boys and girls bathrooms by installing new countertops and cabinets, finishing the shelving in the girls bathroom and constructing 10 new step stools for the children to use.
- First Aid/CPR training was held for staff. All staff are now certified.
- The California Pizza Kitchen fundraiser is scheduled for September 22, 2015. See coupon to the right.



(Continued on page 9)

Join us at
California Pizza Kitchen
for a flavorful FUNdraising event!

Just bring in this flyer, present it to your server, and **20%** of your check will be donated to our organization. Purchases include dine-in, take-out, catering and all beverages!

Fundraiser in support of

Aiea Hongwanji Preschool
September 22, 2015, Tuesday
(All Day)

California Pizza Kitchen

Pearlridge Mall (Downtown- across from Inspiration Pop-Up)
98-1005 Moanalua Road

Open 10:00 AM till 9:00PM

(808) 487-7741

Go to cpk.com to view our pizzas, pastas, salads, appetizers & desserts. You can even order online!



Join the
CPK Adventure Club
at cpk.com and receive
\$5 off your next visit!

Eligible groups include non-profit schools and 501c organizations. Donation amount excludes proceeds from tax, gratuity, gift card and retail purchases. Valid for dine-in, take-out, online orders, catering or curbside service. Alcoholic beverages included. Not valid on delivery. Event proceeds void if flyers are distributed in or near the restaurant. Manager, please attach this flyer to the guest check.



Aiea Hongwanji Judo Club

Thank you to the Aiea Hongwanji Judo Club for waxing the hall floors ♥



JN CARWASH FUNDRAISER



The JN Automotive Group is proud to sponsor AIEA HONGWANJI JUDO CLUB Carwash Fundraiser.

Here are the specifics of the event.

DATE: Sunday September 20, 2015
WHERE: JN Chevy/Mazda 2999 N. Nimitz Hwy

TIME: 10:30 am – 3pm (participants to arrive by 10:00am)

JN will provide:

- Carwash certificates- printing of the \$10 carwash certificates for you to PRE-SELL.
- Forms to account for the 250 certificates.
- All necessary equipment for washing of the vehicles (hoses, carwash solution, sponges, chamois, buckets, etc.)
- Bottled water for you to sell.

AIEA HONGWANJI JUDO CLUB to provide:

- Approximately 40 enthusiastic car washers!
- Responsible for financial control of all certificates sold.

Benefit:

- AIEA HONGWANJI JUDO CLUB will keep the total of each certificate sold. (No deposit required.)
- Easier and faster method of raising money than any other fundraiser.



FUNDRAISER FOR AIEA HONGWANJI JUDO CLUB. The Judo Club will be selling certificates for a carwash on Sunday, Sept 20 at JN Chevy/Mazda, located at 2999 N. Nimitz Hwy. near the airport. The purpose of the carwash is to raise money for a trip to give an opportunity for the younger students, seniors and Sensei's to experience the Japanese culture. Japan is the birthplace of Judo, and produces the best Judoka. We are going to practice with one of the top clubs in the country, and see why they are the best. We would appreciate any support via our fundraiser, to help get us on our journey. Thank you.

AIEA HONGWANJI JUDO CLUB.

PICTURES



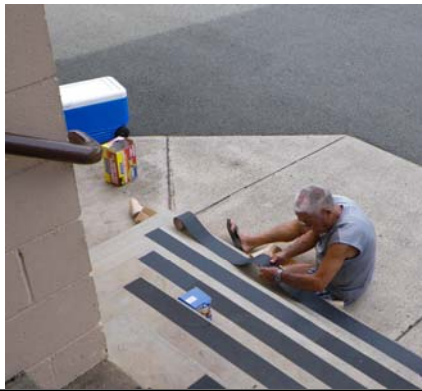
Familiar faces at the "Peace on Your Wings" showing on Sunday, August 9 at Hawaii Theatre



Constructing the Yagura. (more pictures next month)



Rev. Yagi brought back new beautiful obon lanterns from Japan.



Thank you to Frank for installing the safety treads to the back steps to the hall.



Many families brought flowers to the Hatsubon Service.



In the kitchen at Hatsubon.



Refreshments after Hatsubon service.



Pacific Buddhist Academy News

RYUKOKU SOGO GAKUEN SEMINAR 2015 Through the generosity of the Ryukoku Sogo Gakuen, students from Pacific Buddhist Academy were fortunate to travel to Japan as participants at the Ryukoku Sogo Gakuen Religious Seminar in Kyoto. Seniors Jaysen H____, Kelly N____, and Skyler N____ were selected as representatives from PBA and interacted with students from several Japanese High Schools. Students learned how to properly chant and sing traditional gathas, took part in group discussions about “Finding the Richness and Warmth in Life,” and created presentations with other students from Japan. Students also toured temples at Mt. Hiei and learned about the history of the Hongwanji during a visit to the Nishi Hongwanji complex.

The friendships the students made were reflected through their group presentations. Skyler and Jaysen’s group placed first and Kelly’s group came in second. Both groups worked as a team, shared ideas, embraced each other’s differences, and overcame a language barrier. Although PBA students reported that they gained a lot from the seminar, many Japanese sensei remarked that they learned a great deal from the PBA students. One sensei in particular noted that he’s always enjoyed the traditionalism of the Japanese educational system, but he was very impressed with our students’ ability to freely express their opinions during discussion sessions. He noted that they have great depth to their thoughts and wishes his students were as confident to express themselves as our students do.

It was an unforgettable experience for the group and we would like to thank the Ryukoku Sogo Gakuen for providing this opportunity to PBA. We would also like to thank Reverend Toshiyuki Umitani of Honpa Hongwanji HQ, Ms. Aya Honda of Hyogo University, Reverend Masako Sugimoto and Reverend Tomo Fujii of Hongwanji International Center for their assistance during this trip. (Liane Vilorio – PBA)

2015 PBA LIGHTING OUR WAY BANQUET: Invitations Are in the Mail! Pacific Buddhist Academy’s tenth Annual Lighting Our Way (LOW) Banquet will be held Friday, October 2, at the Waialae Country Club at 5 p.m. This year’s distinguished honorees include Satoru Abe, one of Hawaii’s best known sculptors and painters; **Frederick Nonaka, past President of the Honpa Hongwanji Mission of Hawaii and first Board Chair of PBA;** Dr. Robert Peters, early childhood educator and former Head of School at Hanahauoli; and L. Candy Suiso, creator of the successful Searider Productions at Waianae High School.

Visit the PBA website: <http://www.pacificbuddhistacademy.org> to learn more about benefits for Table Sponsors at the 2015 LOW Banquet, or to download a donation form for the LOW Banquet Silent Auction.

Please contact Rüdiger Rückmann at 532-2649 or rudiger.ruckmann@pbahi.org to purchase a seat or sponsor a table. To contribute an item for the Silent Auction, please call or write Debbie Martin, 532-2649, or debbie.martin@pbahi.org.

SUPPORT PBA WHEN YOU SHOP! If you shop at **Safeway**, you can use your **Safeway Club Card** to benefit PBA every time you make a purchase! Register your Safeway card at **eScrip** by visiting www.escrip.com/safeway/ and Safeway automatically donates a percentage of all your qualifying purchases to PBA. Please note that purchases made by credit card **do not earn contributions** for PBA, but purchases made by other methods like **cash, check, or debit card** do qualify. Thank you for your support.

GET READY FOR THE 2015 FOODLAND GIVE ALOHA CAMPAIGN! Throughout September PBA families and supporters can donate up to \$249 per person to PBA through Give Aloha, Foodland’s annual community matching gifts program! Starting Sept 1, you may use your Maika’i card to make a donation at any Foodland, Sack N Save or Foodland Farms store. **PBA’s registration code is 78393.** PBA will receive 100% of your donation plus additional matching funds from Foodland and the Western Union Foundation. Your gift through Foodland’s Give Aloha program will kick start PBA’s 2015 – 2016 Annual Fund goal of \$120,000 and will help us meet the intellectual, physical, emotional, and social needs of our students. Every dollar supports PBA’s pedagogical projects, a few examples of which are: • *Measuring equipment for applied science tidal zone surveys* • *Video editing software for digital storytelling* • *Field trips*. We are truly grateful for your continuing investment in our students, staff, and school, and humbly ask for a donation of any amount to the Give Aloha program.

THANK YOU FOR YOUR DONATION

The JIKO will publish names and amounts of donations made for services or projects. If you DO NOT want your name published, please mark your donation—"NO PUBLISH", and your name will be omitted and your donation marked "Generous Member or Anonymous".

Donations listed here were received prior to approximately July 23, 2015. Donations received after this date will be published in next month's newsletter.

HI-5 RECYCLABLE DONATIONS

Deposit Hi-5¢ donations outside in the back (Makai) corner of hall building where our master recycler Kazuto Tomoyasu works on it on Hosha days. Please deposit non Hi-5 items and card board at our neighborhood school depositories or your blue home recycle bins. If you would like to be recognized for your donation, please include your name.

Note: For Hi-5 recyclables, may we ask for your kokua in removing the caps from the plastic beverage containers. In addition, plastic drink bottles cannot be redeemed without the Hi-5 label. If detached, please roll up and stick it in the bottle. Thank you for your continued support.

To all Hall Users—Please deposit your Hi-5 recycle items in the Recycle area, not in the trash can.
Thank you!!

Recycle  Hawai'i 

(Continued from page 6)

Aiea Hongwanji Preschool

"The U.S. Department of Agriculture prohibits discrimination against its customers, employees, and applicants for employment on the bases of race, color, national origin, age, disability, sex, gender identify, religion, reprisal, and where applicable, political beliefs, marital status, familial or parental status, sexual orientation, or all or part of an individual's income is derived from any public assistance program, or protected genetic information in employment or in any program or activity conducted or funded by the Department (Not all prohibited bases will apply to all programs and/or employment activities. If you wish to file a Civil Rights program complaint of discrimination, complete the USDA Program Discrimination Complain Form, found online at http://www.ascr.usda.gov/complaint_filing_cust.html or at any USDA office, or call (866) 632-9992 to request the form. You may also write a letter containing all of the information requested on the form. Send your completed complaint form or letter to us by mail at U.S. Department of Agriculture, Director, Office of Adjudication, 1400 Independence Avenue, S.W., Washington, D.C. 20250-9410, by fax (202) 690-7442 or e-mail at program.intake@usda.gov. Individuals who are deaf, hard of hearing or have speech disabilities may contact USDA through the Federal Relay Service at (800) 877-8339; or (800) 845-6136 (Spanish). USDA is an equal opportunity provider and employer."

HONPA HONGWANJI MISSION OF HAWAII AFFIRMATION RITES CEREMONY (KIE-SHIKI)

DATE: **October 10, 2015**

TIME: **10:00 AM**

PLACE: **Pearl City Hongwanji Mission**

Oahu Hongwanji Council will hold Affirmation Rites as a commemorative event of the Pearl City Hongwanji Buddhist Women's Association Centennial/Kyodan 110th Anniversary.

The Affirmation Rites will be officiated by the Bishop of Honpa Hongwanji Mission of Hawaii. This ritual gives the recipient a definite awareness of becoming a follower of the Buddha's teachings and a member of the Hongwanji. During the Rites, each recipient will receive his/her own Homyo (Dharma Buddhist Name) from the Bishop.

There is no limit on age; however, if the aspirant is below 20 years of age, his/her parent or guardian will be asked to sign on the official record.

It is hoped that through this ritual one will gain conviction in his/her religion and that it will be a definite start into the life of a Buddhist.

Application Fee for the Affirmation Rites is \$50. Call the temple office at 487-2626 for assistance in completing the application form. Deadline for submittal of the form and fee to the Oahu Hongwanji Council is **Sept 10, 2015**.

**Major Yearly
Memorial
Service
Schedule**

**For The Year
2015**

2014-1st year

2013-3rd year*

2009-7th year

2003-13th year

1999-17th year

1991-25th year

1983-33rd year

1966-50th year

* from the 2nd anniversary, please follow the Japanese custom of holding the service the year ahead.

Family Memorial Service

In the Japanese Buddhist tradition, families hold memorial services (Nen-ki Hoyo) in memory of our loved ones, and to express our gratitude for Amida Buddha's Infinite Light.

The Buddha's Wisdom and Compassion embrace our loved ones in the land of peace and happiness. May we also remember Amida's embrace on our lives as we remember those who have departed.

If your family would like to arrange a memorial service for your loved one, please call the temple at 487-2626 (please leave a message if no one is available). You may schedule the service either before or after the memorial date. The ideal time is when as many family members as possible will attend. If you have any questions about memorial services, please call Rev. Yagi at 488-5685 (residence).



Nokotsudo (Columbarium)

If you would like to visit the Nokotsudo, please call the minister at 488-5685 (residence) or the office at 487-2626 at least two days in advance so that arrangements can be made to open the Nokotsudo for you.

**GOLDEN
CHAIN
OF LOVE**

I am a link in
Amida Buddha's
Golden Chain of
Love that
stretches around
the world. I must
keep my link
bright and
strong. I will try
to be kind and
Gentle to every
living thing and
protect all who
are weaker than
myself. I will try
to think pure and
beautiful
thoughts, to say
pure and
beautiful words
and to do pure
and beautiful
deeds, knowing
on what I do
now depends
not only on my
happiness or
unhappiness but
also that of
others. May
every link In
Amida Buddha's
Golden Chain of
Love become
bright and
strong and may
we all attain
Perfect Peace.
Namo Amida
Butsu.

Aiea BWA News

Hope you all enjoyed this year's Obon!

Many thanks to all the members, family and friends who helped make our Obon so enjoyable and successful ! Aiea BWA is so grateful to have so many awesome members who have helped in the planning, preparation, serving and clean up for all the things we have done to put on such a big event! Mahalo for all the generous donations, time and energy you have shared.

I hope you were able to take home some of the creative handcrafted and food items made by our talented members. We will have another crafts sale early next year if you missed it, or would like to order.



We are fortunate to have Janice Ito in charge of our crafts and weekly Wed. Nite sessions at 7:30 pm.

Our next movie nite will be on Sept. 16 at 7:30 pm featuring, "Lost in Translation" starring Bill Murray and Scarlett Johansson. (NOTE: rated R for some sexual content.) Refreshments to be provided.

"Thank you to Sugi Tomori for a fun and useful Japanese language lesson on July 29"

We are happy to welcome new member, Nanci Muraoka. If you know of anyone who would like to join, tell them to come to our social hours on Wed. nites or Thursday mornings.. Call 487-2626 for more info.

A BIG MAHALO to all the ladies & men who helped prepare and serve the refreshments for the Hatsubon service !!! Everything turned out really well for the gathering of @80 people ! Food and donations were plentiful and super ono! We are truly grateful for these people who generously spent their time and energy making This event so successful . Thank you, again and again.

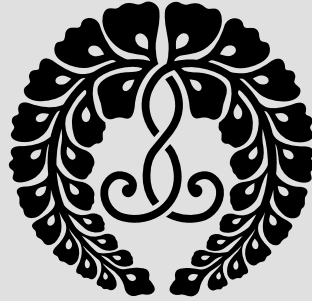
Take some time off to rest and thank you again for your precious dana during the months leading up to Obon. We appreciate your continued participation in our temple events.

With Gassho,
Arlene Sunada

Aiea Hongwanji Mission
99-186 Puakala Street
Aiea, Hawaii 96701

Change Service Requested

Non-Profit Org.
U. S. Postage
Paid
Permit No. 42



2015 PATCH OF MADNESS

WHERE: Ewa Hongwanji Mission
91-1133 Renton Road, Ewa, Hawaii



WHEN: Saturday, October 24, 2015

TIME: 8:00 am - 12:30 pm

WHAT: Pick your pumpkin from the Pumpkin Patch
Pumpkin Carving (bring your own tools)
Bingo
Lunch

COST: \$0 (free)



REGISTRATION:

*By Sunday, October 11, 2015.
Call temple office at 487-2626 to register.
Please provide number of children and number of
adults. Also name and age of each child.*

sponsored by:
MRRL (Membership, Recruitment, Retention, and Leadership) Committee



2015 PATCH OF MADNESS



PROGRAM:

8:00 Registration
8:30 Service
9:00 Pumpkin hunt by child's age:
1 - 5 years old
6 - 10 years old
11+ years old
Pumpkin carving
10:00 Awards
10:15 Bingo
11:15 Lunch
12:00 Clean-up

